

# Review of City Centre Access

## Easy read version, October 2021

### The process so far



We asked people how we can make York city centre accessible and welcoming to all.

### Footstreet proposal

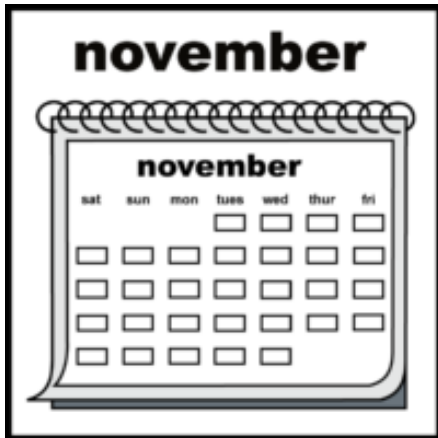


When the city reopened after lockdown last year, the council had to create more room to allow people to social distance and for shops to use outside spaces.



We did this by increasing the number of 'footstreets', where cars are not allowed.

This summer we asked people whether to keep these temporary changes.



In November, the council's Executive will decide whether to make the footstreets area permanent.

## Review of city centre access



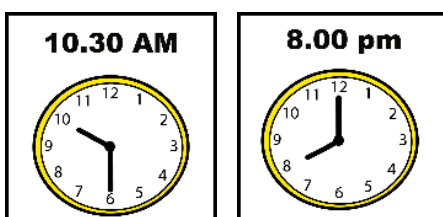
This summer we also asked how people arrived, and moved through, the city centre.

## Sharing ideas

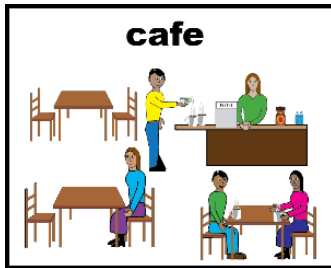


This survey shares some ideas and asks whether they might help you to access York city centre.

## Evening opening

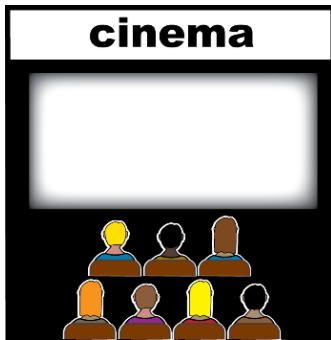


After lockdown we increased the number of hours that cars cannot access these streets to between 10.30am and 8.00pm (it was 5.00pm before lockdown).



This allowed cafes to use outdoor space, and shops to open later.

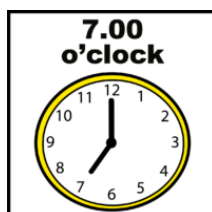
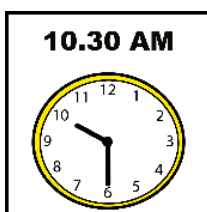
Some people liked being able to enjoy these things later into the evening.



Some Blue Badge holders said the longer footstreet hours stopped them being able to access evening attractions or events.



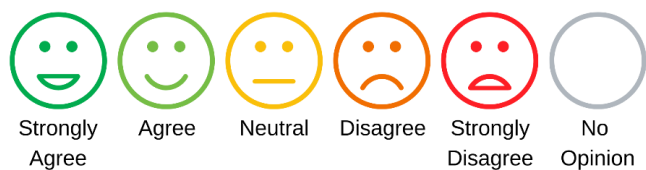
Some food businesses said that longer footstreet hours slow down takeaway services, as delivery vehicles cannot enter the footstreets.



We propose that the new footstreet hours should be from 10.30am to 7.00pm.



What do you think about this (tick one)?





If you disagree, what time would you prefer footstreets to end (tick one)?

Five empty circles are arranged horizontally, each with a time label below it: 5 pm, 6 pm, 8 pm, 9 pm, and 10 pm.

Why do you think this?

A large empty rectangular box for providing an answer to the question above.

### Footstreets start time



If the footstreets do run later into the evening, should we start the footstreets later (at midday) on a weekday, at quiet times of the year?



This would allow Blue Badge holders more time to access city centre services.



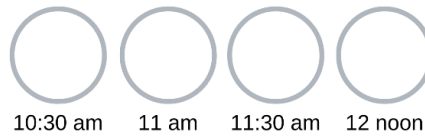
This would also mean that other vehicles would be able to drive in to the footstreet areas until midday too.



If the footstreets were to finish later in the evening, do you think they should start later on weekdays (tick one)?

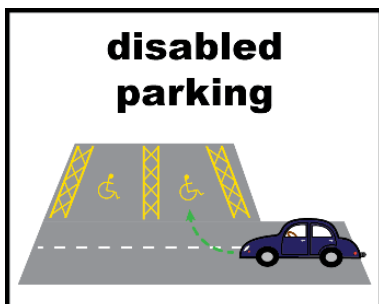


What time would you prefer the footstreet hours to start (tick one)?



Why do you think this?

## Improve access to footstreets for disabled people



We have added 16 new disabled parking bays across the city centre, with 13 more to follow.

Blue Badge holders can also park on double yellow lines in the city centre.



One area where Blue Badge holders park is Duncombe Place (the road between McDonalds and York Minster).

We could create more disabled parking bays here by removing the flower bed, and moving cycle parking nearby.



What do you think about this (tick one)?



Why do you think this?

## Shopmobility and Dial-a-Ride



The Shopmobility service and Dial-a-Ride help some disabled people to get around the city centre.



We propose to invest in improving these services.



We propose to work with Tier (who provide e-Bikes and e-Scooters) to see if they can provide mobility aids too.



What do you think about this (tick one)?



Why do you think this?

## Shuttle bus

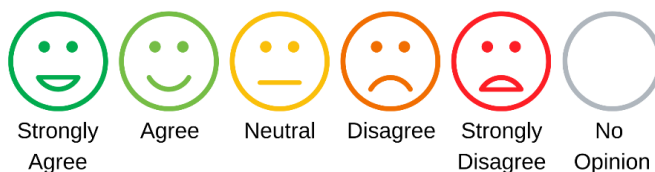


Some cities have a shuttle bus to help disabled people get around their city.

This is a possibility for York.



What do you think about this (tick one)?



Why do you think this?

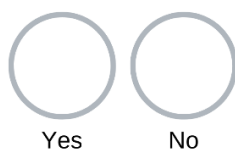


We need to find out:

- how much it would cost
- if disabled people would use it
- where it should run to and from



If you are disabled person would you use a service of this type (tick one)?







If not, why it wouldn't it work for you?

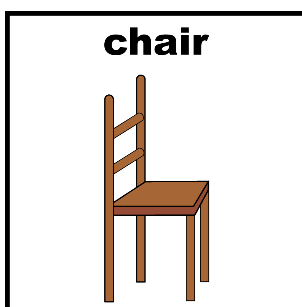
## Better facilities



For many people, flat surfaces, toilets and lots of places to sit and rest are important.



We will be adding more dropped kerbs and crossing points across the city centre.



We propose to:

- provide more seating in the city centre
- improve disabled toilets
- improve the quality of pavements



What do you think about this (tick one)?



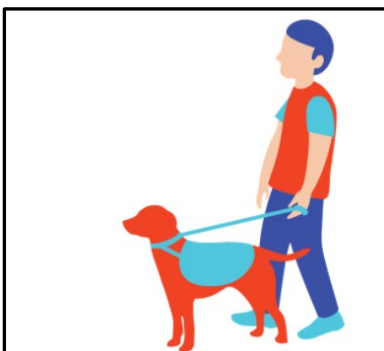
Why do you think this?

## Cycling, e-Bikes and e-Scooters



Some people think cyclists, e-Bikes and e-Scooters should:

- be able to ride everywhere in the footstreets
- have a new cycle route through the footstreet area



Some people, including those with visual or hearing impairments, or those with small children, said that sharing footstreets with cyclists, e-Bikes and e-Scooters makes them feel unsafe.



We propose that cycles, e-Bikes and e-Scooters should not be able to access the footstreets area during pedestrianised hours.



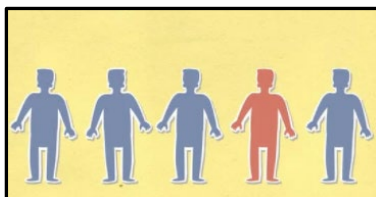
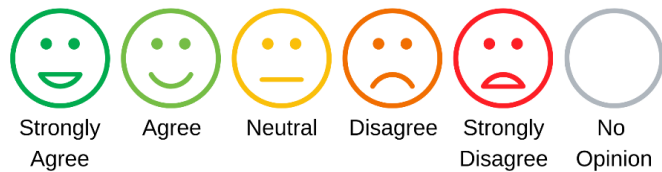
We propose to:

- improve cycle routes around the edge of the footstreets
- provide more, and better, cycle parking



Cyclists would then access the footstreets on foot.

What do you think about this (tick one)?



If general cycling is not allowed in the footstreets, we have been asked to consider allowing it for some people.

## Cycles as a mobility aid



Some disabled people consider a cycle as their mobility aid.

They would like to be able to use their cycle in the footstreet area.



They would need to carry ID showing them as having a disability (for example, a Blue Badge or bus pass).



We proposed a trial allowing disabled people who use their cycle as their mobility aid to use it in the footstreets area.

What do you think about this (tick one)?



Why do you think this?

## Cycle couriers and deliveries



No delivery vehicles or cycle couriers are allowed in footstreets at the moment (from 10.30am to 8.00pm).



Some people think delivery bikes should be allowed in the footstreets:

- cargo bikes delivering to businesses
- cycle couriers delivering takeaways



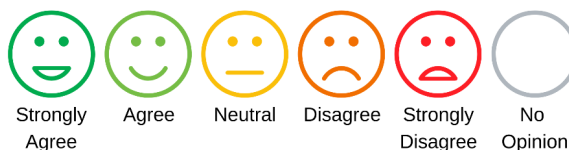
Some people think:

- couriers should walk with their bike in the footstreets
- sharing space with bikes is not safe
- other cyclists might think they can cycle there too



Should we let **cargo bikes** cycle through the footstreets?

What do you think about this (tick one)?



Strongly Agree

Agree

Neutral

Disagree

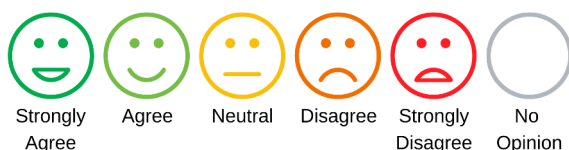
Strongly Disagree

No Opinion



Should we let **couriers** cycle through the footstreets?

What do you think about this (tick one)?



Strongly Agree

Agree

Neutral

Disagree

Strongly Disagree

No Opinion



We could let cargo bikes and couriers cycle in the footstreets **after 5.00pm** (when food deliveries are busiest)?

What do you think about this (tick one)?



## Improving city centre cycle routes



Council officers considered a cycle route proposed by York Cycle Campaign through the footstreet area:

- Parliament Street, Davygate, Blake Street



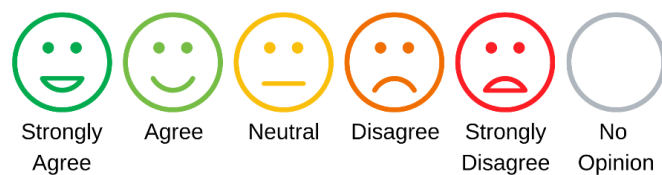
They think that it could cause too much conflict between cyclists and pedestrians:

- not enough space to create a safe cycle lane
- road layout changes are needed.



We propose to improve the existing cycle routes around the edge of the footstreet area.

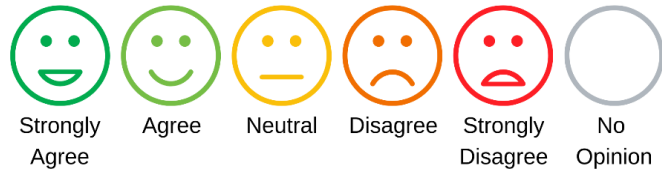
What do you think about this (tick one)?





We propose to add secure cycle storage on the edge of the footstreets with people then continuing on foot.

What do you think about this (tick one)?

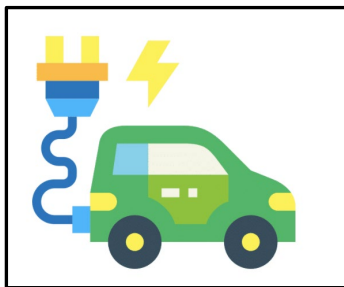


## Deliveries



The council want to reduce:

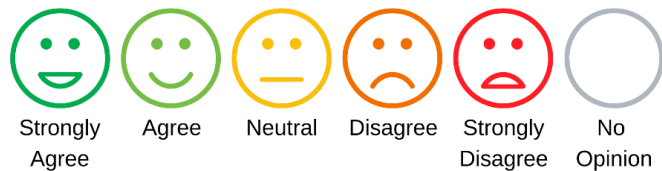
- carbon
- the impact of vehicles on our city centre



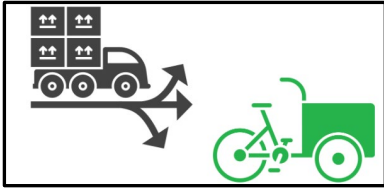
We propose that all deliveries to city centre business are made by ultra-low emission vehicles (electric vehicles) or cargo bikes by 2030.



What do you think about this (tick one)?



Why do you think this?



We are looking at places outside the city centre where deliveries could be collected, and transferred to the city centre by electric vehicles or cargo bikes.



What do you think about this (tick one)?



Why do you think this?

## How to get involved



We want to check whether you agree with these ideas.

Have we missed anything?

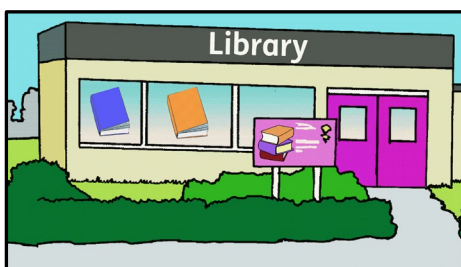




Tell us in our online survey:  
[www.york.gov.uk/AccessConsultation](http://www.york.gov.uk/AccessConsultation)

Or, you can print this Easy Read version  
and return it by post to:

FREEPOST RTEG-TYYU-KLTZ  
Business Intelligence (49)  
City of York Council  
West Offices  
Station Rise  
York  
YO1 6GA

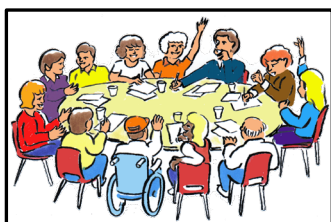


Or, you can write what you think at  
Explore libraries, in York, Clifton, Tang  
Hall and Acomb.



Tell us by **25 October 2021**.

## What happens next?



In November the council's Executive will  
look at what you tell us and decide  
whether to agree these ideas.

## Image sources



We thank **Inspired Pics** who provided most of the images for this publication. Other images sourced from Canva and <http://www.easyonthei-leeds.nhs.uk>.

You should seek permission from the relevant image owner if you wish to use any of these images.