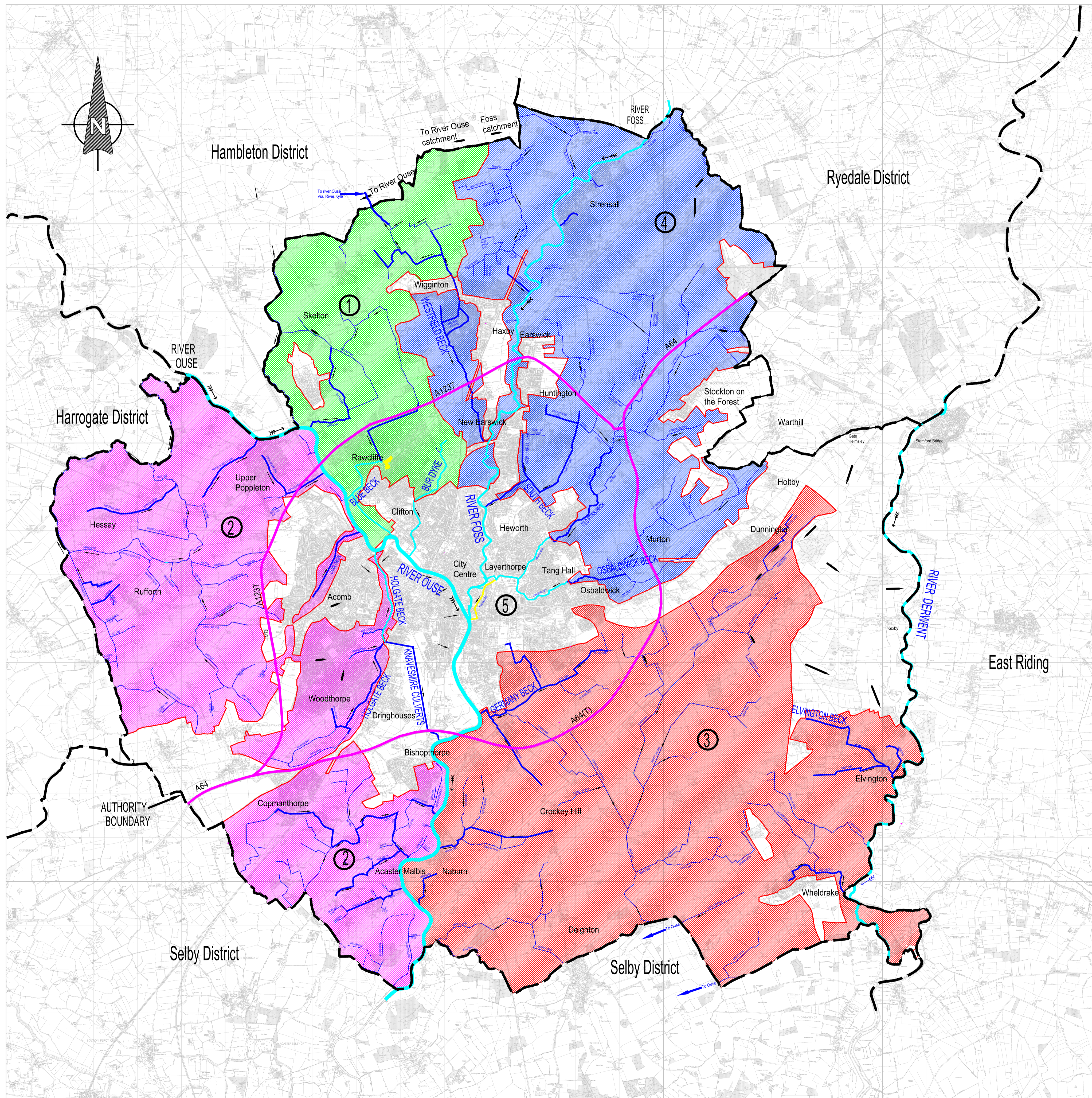


Figure 4



KEY

- 1 KYLE & UPPER OUSE INTERNAL DRAINAGE BOARD
- 2 AINSTY (2008) INTERNAL DRAINAGE BOARD
- 3 OUSE & DERWENT INTERNAL DRAINAGE BOARDS
- 4 FOSS (2008) INTERNAL DRAINAGE BOARD
- 5 CITY OF YORK COUNCIL

INTERNAL DRAINAGE BOARDS

IDB:
 2 - AINSTY (2008) CLERK: York Consortium of Drainage Boards
 3 - OUSE & DERWENT BILL SYMONS
 4 - FOSS (2008) Derwent House
 Crockey Hill
 York
 YO19 4SR
 Tel: 720795
 Fax: 720800

1 - KYLE & UPPER OUSE
 NICOL EVERARD/Dark Scofield
 Hunter Gate & Holkroy
 Club Chambers
 Museum Street
 York
 YO1 4SP
 Tel: 652502

CONSULTANTS:
 RKL - ARUP
 Admiral House
 Rose Wharf
 78 East Street
 LEEDS LS2 9JEE
 (W/McSain)
 Tel: 01132 428488
 Fax: 01132 428573

All non-IDB areas
 7 - CITY OF YORK COUNCIL
 BRIAN HEBDITCH /
 JIM CAVANAGH
 Engineering Consultancy
 Tel. Ext. 3510 / 3507

- Main rivers (Managed by Environment Agency).
- Ordinary watercourses (Managed by Internal Drainage Boards OR City of York Council)
- Rawcliffe Lake (Managed by Yorkshire Water Services)
- Public Sewer (Managed by Yorkshire Water Services)

Revision	Date	Description	Drawn by:	Checked by:
C	Mar. 11	Area 2 now York Consortium IDB	JC	MT
B	Sept. 07	Key amended	DR	MT
A	June 07	Derwent details amended	JWC	MT



Project Name : **STRATEGIC FLOOD RISK ASSESSMENT - 2011 UPDATE**

Drawing Title : **Internal Drainage Board Boundaries**

Scale : NTS	Date : Mar 2011
Originating Group : Drainage	File Location : L:\document\Engineering Consultancy\Flooding\9659_Strategic Flood Risk Assessment
Status : Feasibility	Drawing by: DRowntree
	Revision Letter : C

Drawing No. 9659-4