

CASTLE MILLS - FLOOR PLANS

Residential Scheme & Pedestrian/Cyclist Bridge

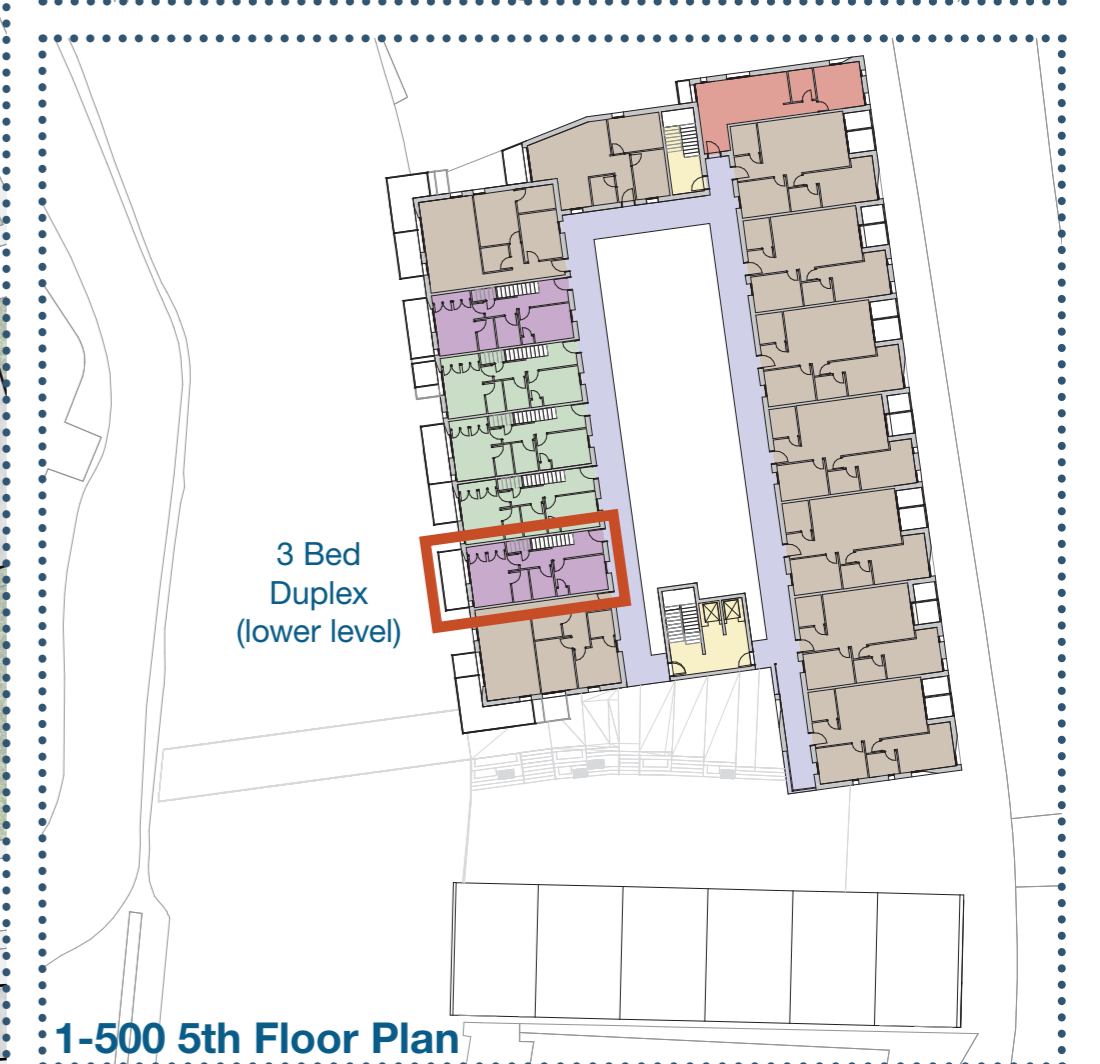
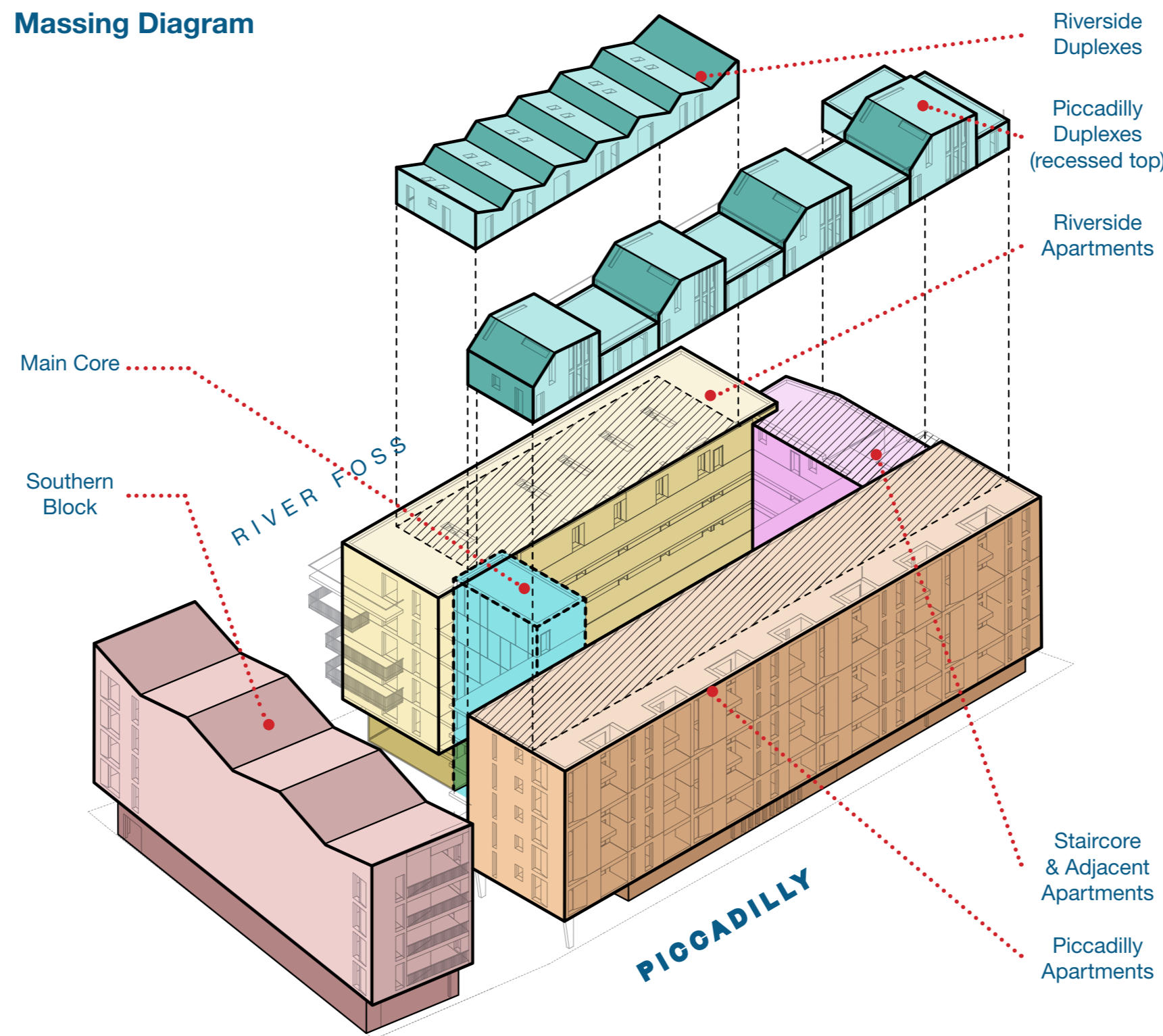
MASSING & FLOOR PLANS

Castle Mills will provide high quality apartments with riverside balconies overlooking Clifford's Tower. Penthouses on the top floor help create an interesting and varied "roofscape" to compliment York's historic skyline. At street level there will be new retail and commercial space to create an active street frontage, and a new public square allowing access to the river and the new pedestrian/cycle bridge over the Foss.

The plan is for the council to act as the designer and developer. This way we can help drive quality and raise the design standard on Piccadilly. It will also put us in greater control of the number of homes available to rent or buy at affordable rates, when they are available for people to live in, not to mention generate a bit more money for the public purse.

The council is taking the lead and making this a car-free development. Removing the car parking allows more commercial space at ground floor that will give the river an active frontage and creates opportunities of routes and glimpses through to the river beyond.

Massing Diagram



- Studio
- 1 Bedroom Apartment
- 2 Bedroom Apartment
- Duplex (2 Bedroom)
- Duplex (3 Bedroom)
- Community / Retail Unit
- Refuse/Plant Room/Lobby
- Cycles
- Circulation/Core
- External Deck

