



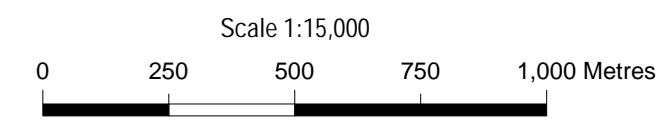
# CITY OF YORK

PUBLICATION DRAFT PROPOSALS PLAN

Consultation Draft October 2014

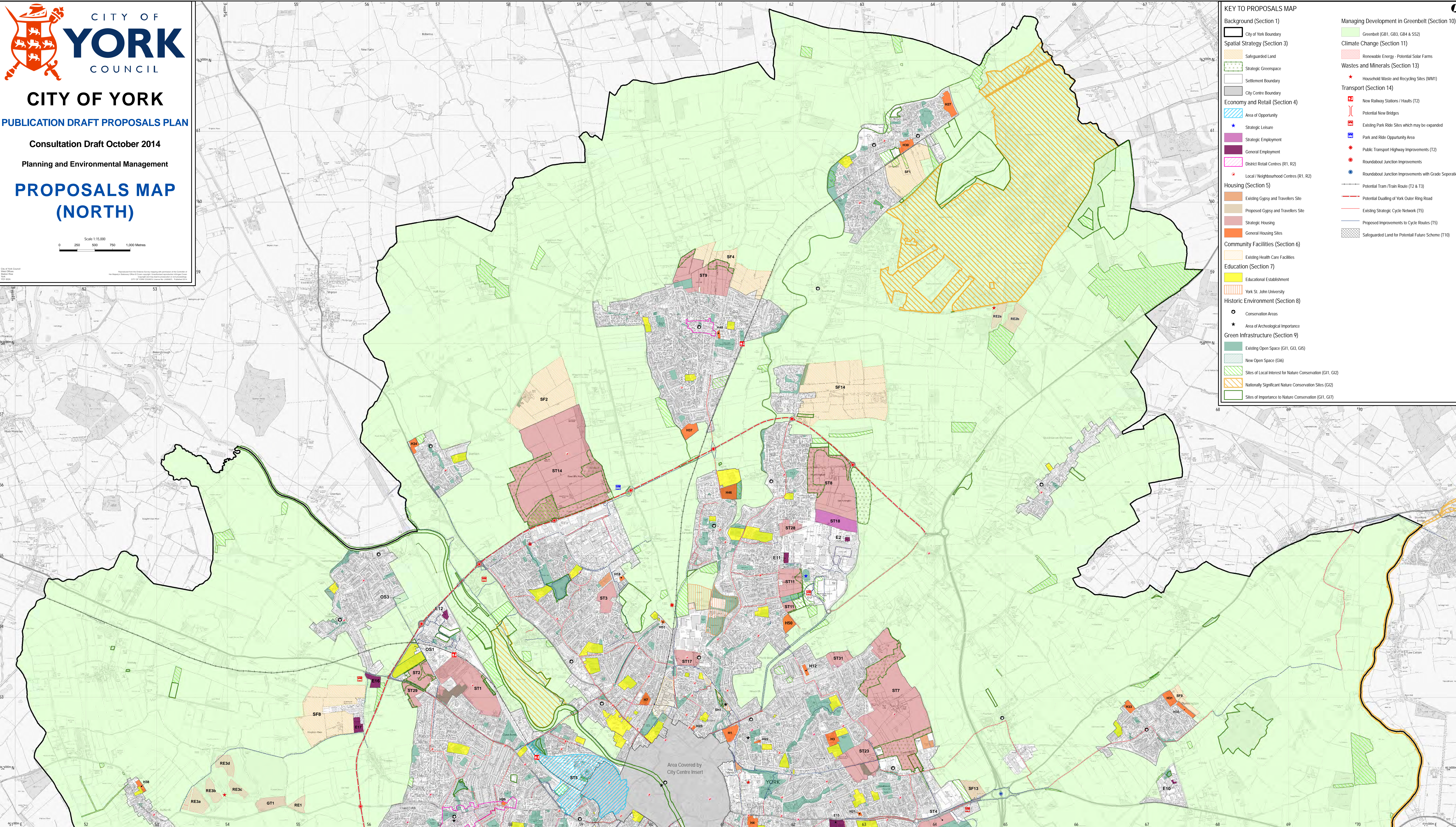
Planning and Environmental Management

## PROPOSALS MAP (NORTH)



City of York Council  
West of York  
5014 5014  
5014 5014

Proposals from the Planning Services created with permission of the Council of York  
© The Mayor and City Council of York 2014  
This map is for information only and does not constitute a contract or offer of any kind.  
The City of York Council is not responsible for any errors or omissions on this map.



**KEY TO PROPOSALS MAP**

**Background (Section 1)**

- City of York Boundary

**Spatial Strategy (Section 3)**

- Safeguarded Land
- Strategic Greenspace
- Settlement Boundary
- City Centre Boundary

**Economy and Retail (Section 4)**

- Area of Opportunity
- Strategic Leisure
- Strategic Employment
- General Employment
- District Retail Centres (R1, R2)
- Local / Neighbourhood Centres (R1, R2)

**Housing (Section 5)**

- Existing Gypsy and Travellers Site
- Proposed Gypsy and Travellers Site
- Strategic Housing
- General Housing Sites

**Community Facilities (Section 6)**

- Existing Health Care Facilities

**Education (Section 7)**

- Educational Establishment
- York St. John University

**Historic Environment (Section 8)**

- Conservation Areas
- Area of Archaeological Importance

**Green Infrastructure (Section 9)**

- Existing Open Space (G1, G3, G5)
- New Open Space (G6)
- Sites of Local Interest for Nature Conservation (G1, G2)
- Nationally Significant Nature Conservation Sites (G2)
- Sites of Importance to Nature Conservation (G1, G7)

**Managing Development in Greenbelt (Section 10)**

- Greenbelt (GB1, GB3, GB4 & SS2)

**Climate Change (Section 11)**

- Renewable Energy - Potential Solar Farms

**Wastes and Minerals (Section 13)**

- Household Waste and Recycling Sites (WM1)

**Transport (Section 14)**

- New Railway Stations / Hauls (T2)
- Potential New Bridges
- Existing Park Ride Sites which may be expanded
- Park and Ride Opportunity Area
- Public Transport Highway Improvements (T2)
- Roundabout Junction Improvements
- Roundabout Junction Improvements with Grade Separation
- Potential Tram / Train Route (T2 & T3)
- Potential Dualling of York Outer Ring Road
- Existing Strategic Cycle Network (T5)
- Proposed Improvements to Cycle Routes (T5)
- Safeguarded Land for Potential Future Scheme (T10)