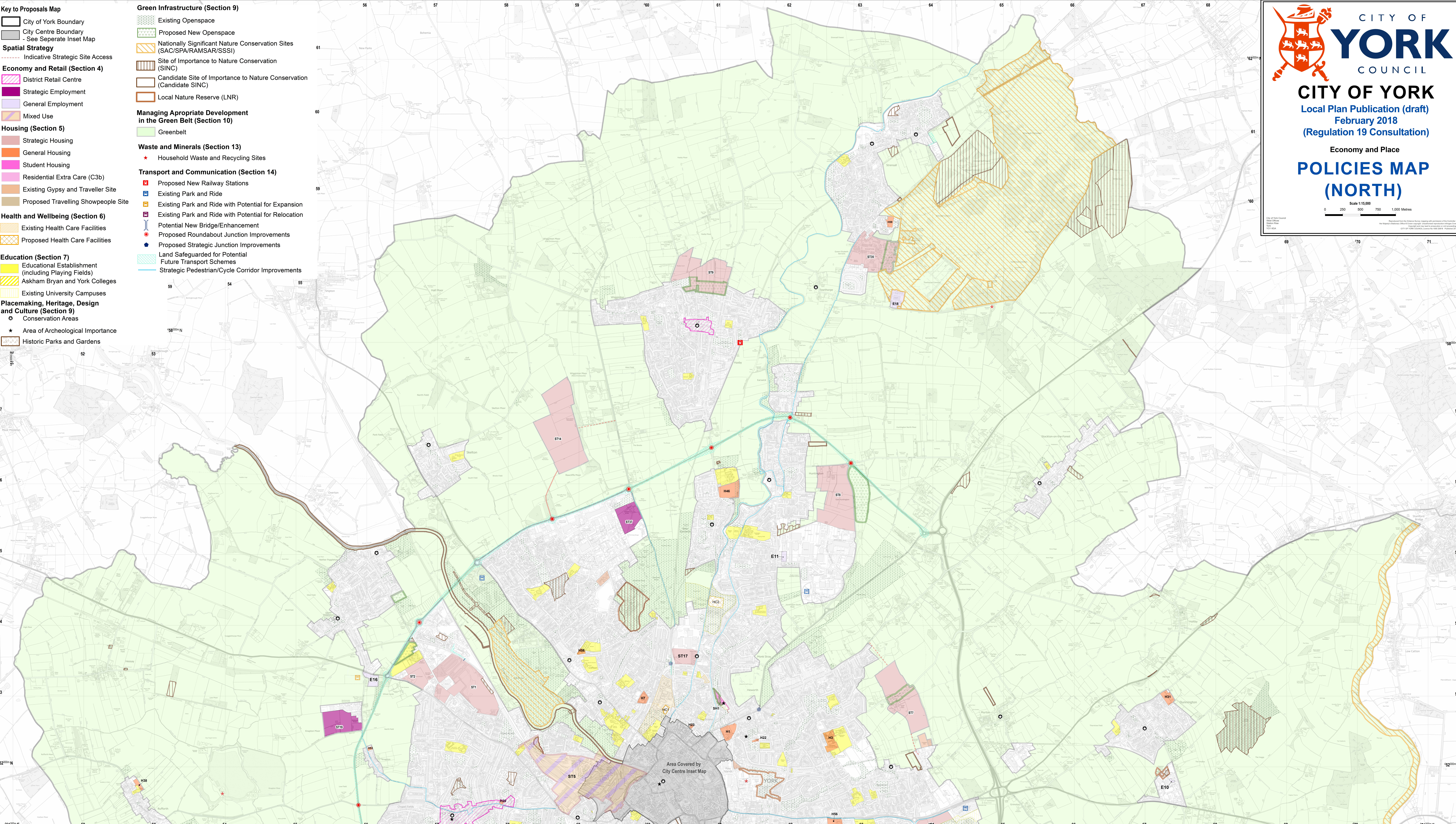


- Key to Proposals Map**
- City of York Boundary
 - City Centre Boundary
 - See Separate Inset Map
- Spatial Strategy**
- Indicative Strategic Site Access
- Economy and Retail (Section 4)**
- District Retail Centre
 - Strategic Employment
 - General Employment
 - Mixed Use
- Housing (Section 5)**
- Strategic Housing
 - General Housing
 - Student Housing
 - Residential Extra Care (C3b)
 - Existing Gypsy and Traveller Site
 - Proposed Travelling Showpeople Site
- Health and Wellbeing (Section 6)**
- Existing Health Care Facilities
 - Proposed Health Care Facilities
- Education (Section 7)**
- Educational Establishment (including Playing Fields)
 - Askham Bryan and York Colleges
 - Existing University Campuses
- Placemaking, Heritage, Design and Culture (Section 9)**
- Conservation Areas
 - Area of Archeological Importance
 - Historic Parks and Gardens
- Green Infrastructure (Section 9)**
- Existing Openspace
 - Proposed New Openspace
 - Nationally Significant Nature Conservation Sites (SAC/SPA/RAMSAR/SSSI)
 - Site of Importance to Nature Conservation (SINC)
 - Candidate Site of Importance to Nature Conservation (Candidate SINC)
 - Local Nature Reserve (LNR)
- Managing Appropriate Development in the Green Belt (Section 10)**
- Greenbelt
- Waste and Minerals (Section 13)**
- Household Waste and Recycling Sites
- Transport and Communication (Section 14)**
- Proposed New Railway Stations
 - Existing Park and Ride
 - Existing Park and Ride with Potential for Expansion
 - Existing Park and Ride with Potential for Relocation
 - Potential New Bridge/Enhancement
 - Proposed Roundabout Junction Improvements
 - Proposed Strategic Junction Improvements
 - Land Safeguarded for Potential Future Transport Schemes
 - Strategic Pedestrian/Cycle Corridor Improvements



Area Covered by City Centre Inset Map