

Key to Proposals Map

- City of York Boundary
- City Centre Boundary - See Separate Inset Map

Spatial Strategy

- Indicative Strategic Site Access

Economy and Retail (Section 4)

- District Retail Centre
- Strategic Employment
- General Employment
- Mixed Use

Housing (Section 5)

- Strategic Housing
- General Housing
- Student Housing
- Residential Extra Care (C3b)
- Existing Gypsy and Traveller Site
- Proposed Travelling Showpeople Site

Health and Wellbeing (Section 6)

- Existing Health Care Facilities
- Proposed Health Care Facilities

Education (Section 7)

- Educational Establishment (including Playing Fields)
- Askham Bryan and York Colleges
- Existing University Campuses

Placemaking, Heritage, Design and Culture (Section 9)

- Conservation Areas
- Area of Archeological Importance
- Historic Parks and Gardens

Green Infrastructure (Section 9)

- Existing Openspace
- Proposed New Openspace
- Sites of Importance to Nature Conservation
- Sites of Local Interest to Nature Conservation
- Nationally Significant Nature Conservation Sites

Managing Appropriate Development in the Green Belt (Section 10)

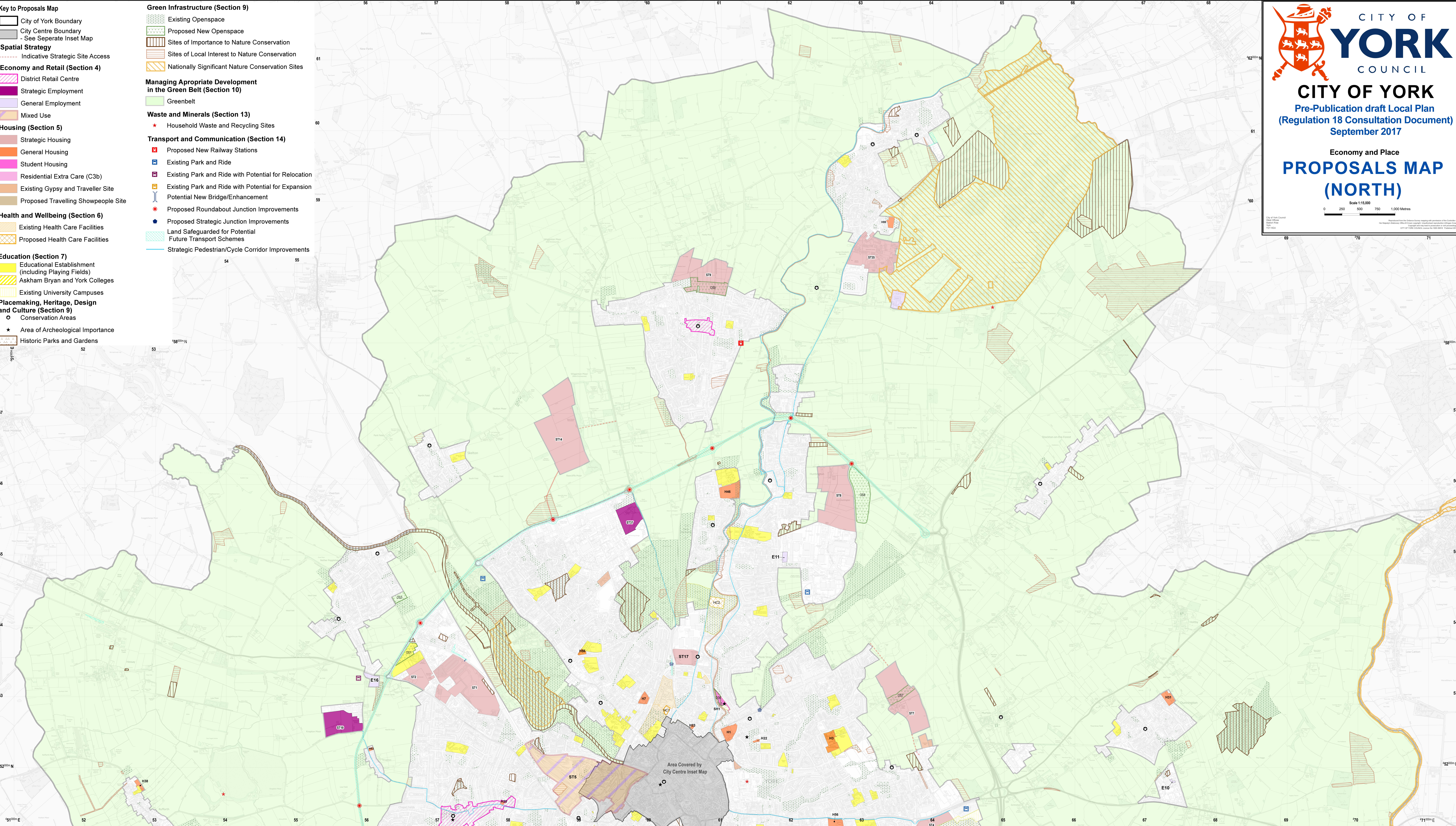
- Greenbelt

Waste and Minerals (Section 13)

- Household Waste and Recycling Sites

Transport and Communication (Section 14)

- Proposed New Railway Stations
- Existing Park and Ride
- Existing Park and Ride with Potential for Relocation
- Existing Park and Ride with Potential for Expansion
- Potential New Bridge/Enhancement
- Proposed Roundabout Junction Improvements
- Proposed Strategic Junction Improvements
- Land Safeguarded for Potential Future Transport Schemes
- Strategic Pedestrian/Cycle Corridor Improvements



Area Covered by
City Centre Inset Map