

# Ageing & our local population

The York Picture

# Local Approach

- Older adults & ageing is a priority within Health & Wellbeing Strategy
  - Ageing Well Partnership
  - Collaboration between health, social care and other partners
  - Joint Strategic Needs Assessment
- Age Friendly York
  - Getting out and about

## Ageing Well

Reduce loneliness and isolation for older people

Continue work on delayed discharges from hospital

Celebrate the role that older people play and use their talents

Enable people to recover faster

Support the vital contribution of York's carers

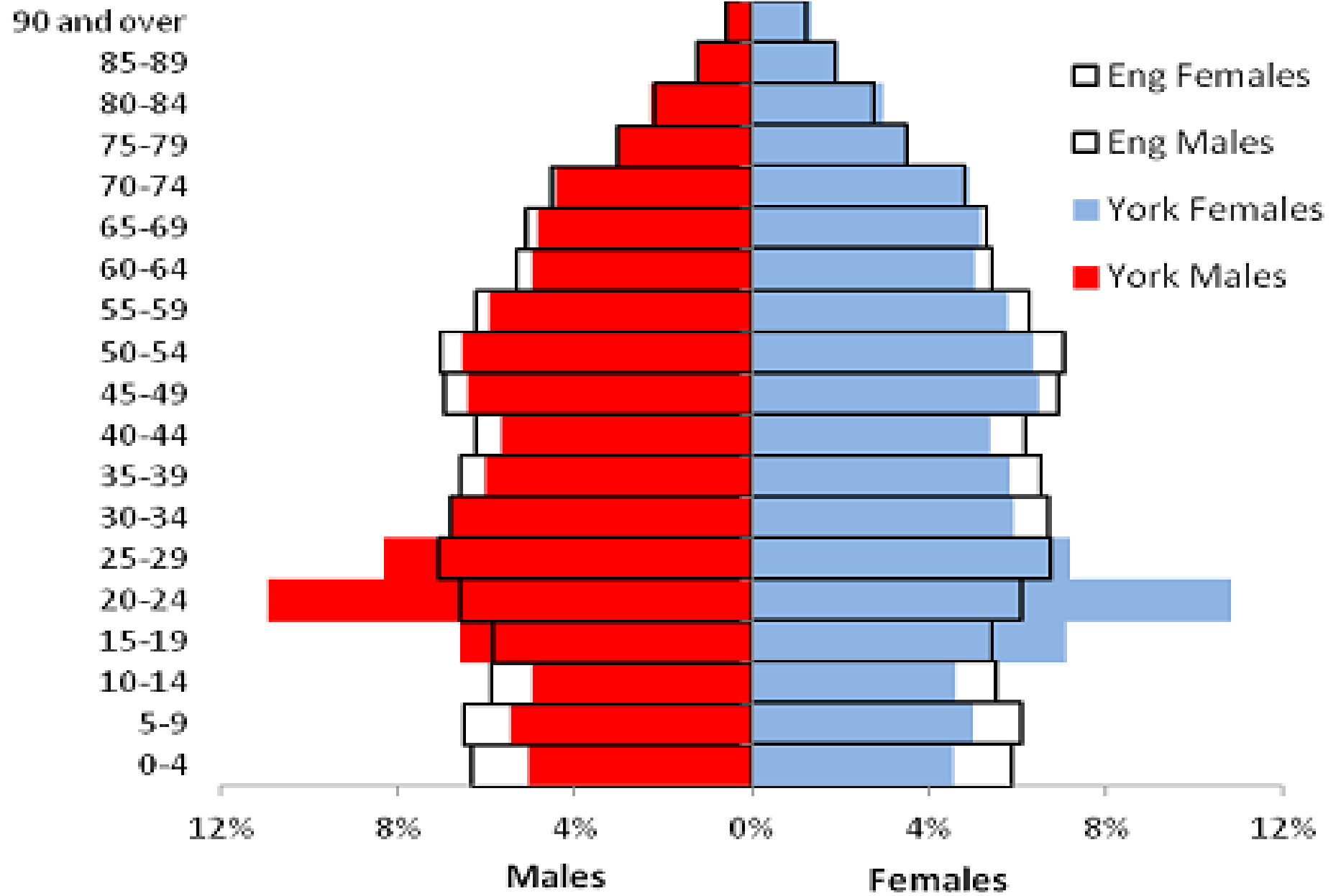
Increase the use of social prescribing

Enable people to die well in their place of choice

# Public Health Approach

- Identify population profile, demographic picture, health needs, and gaps
- Ageing well is about health and wellbeing throughout life
  - Prevention
  - Protective factors to health
- Ageing well can be influenced by a range of factors – not just health:
  - Marmot review; housing, employment, education, social connection

# York Population Pyramid v England (ONS Mid 2017)



# Current Population in York

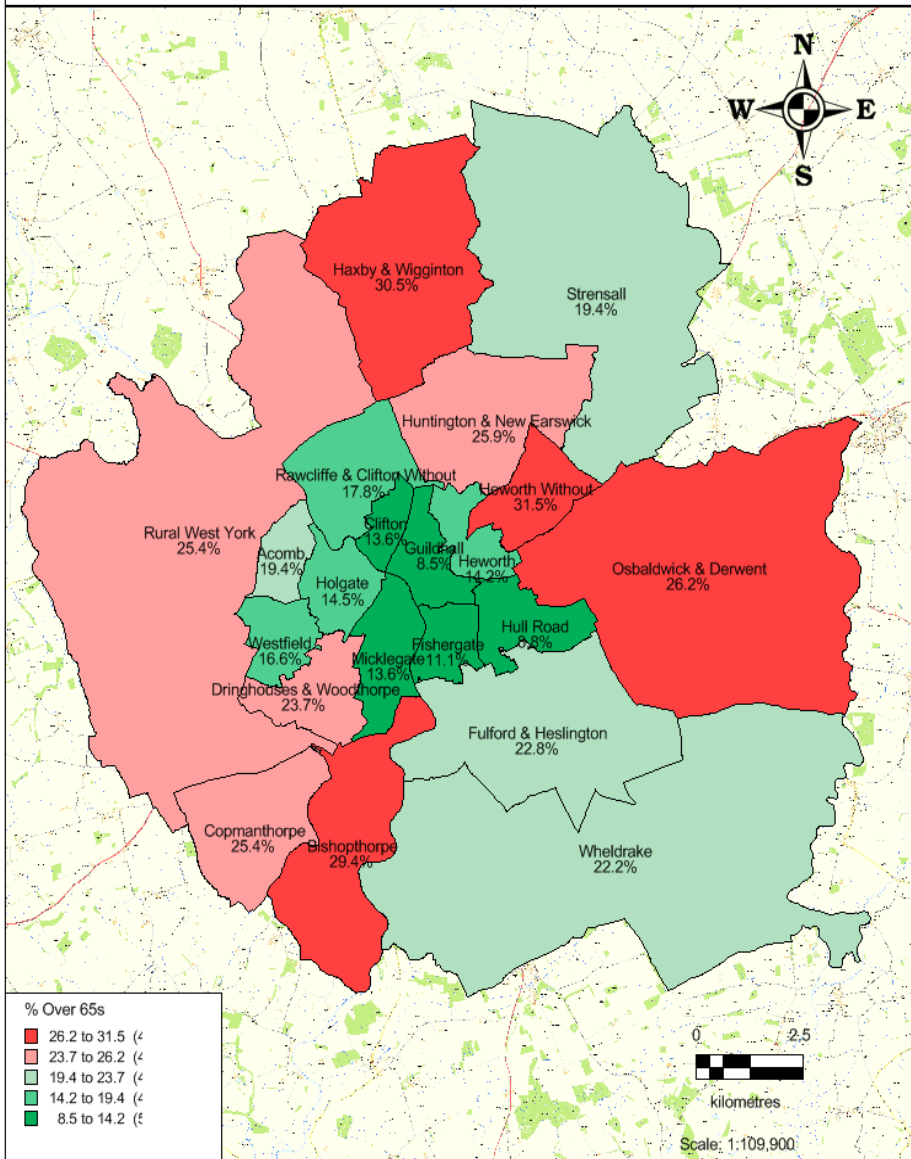
**37,882 over the age of 65 = 18.2% of population**

- **17,743 aged over 75 = 8.5% of population**

- **5,422 85 years or older = 2.6% of population**

Ward Name	Total Population	65-74s	75-84s	85+	Total over 65s	Over 65 as % of Ward Population
Acomb	9,269	942	585	274	1,801	19.4
Bishopthorpe	4,147	688	401	131	1,220	29.4
Clifton	10,007	784	425	153	1,362	13.6
Copmanthorpe	4,115	650	280	115	1,045	25.4
Dringhouses & Woodthorpe	11,639	1,460	916	378	2,754	23.7
Fishergate	10,123	584	355	188	1,127	11.1
Fulford & Heslington	3,770	411	288	161	860	22.8
Guildhall	16,650	773	473	164	1,410	8.5
Haxby & Wigginton	11,923	1,947	1,060	608	3,635	30.5
Heworth	14,461	1,067	645	340	2,052	14.2
Heworth Without	3,933	615	455	167	1,237	31.5
Holgate	12,786	1,064	551	239	1,854	14.5
Hull Road	15,055	685	463	171	1,319	8.8
Huntington & New Earswick	12,698	1,648	1,145	491	3,284	25.9
Micklegate	12,927	1,034	515	214	1,763	13.6
Osbaldwick & Derwent	8,114	1,072	740	312	2,124	26.2
Rawcliffe & Clifton Without	11,946	1,050	753	328	2,131	17.8
Rural West York	7,963	1,002	714	307	2,023	25.4
Strensall	8,334	894	533	190	1,617	19.4
Westfield	14,171	1,242	749	355	2,346	16.6
Wheldrake	4,132	527	255	136	918	22.2

## % of Over 65s by Ward

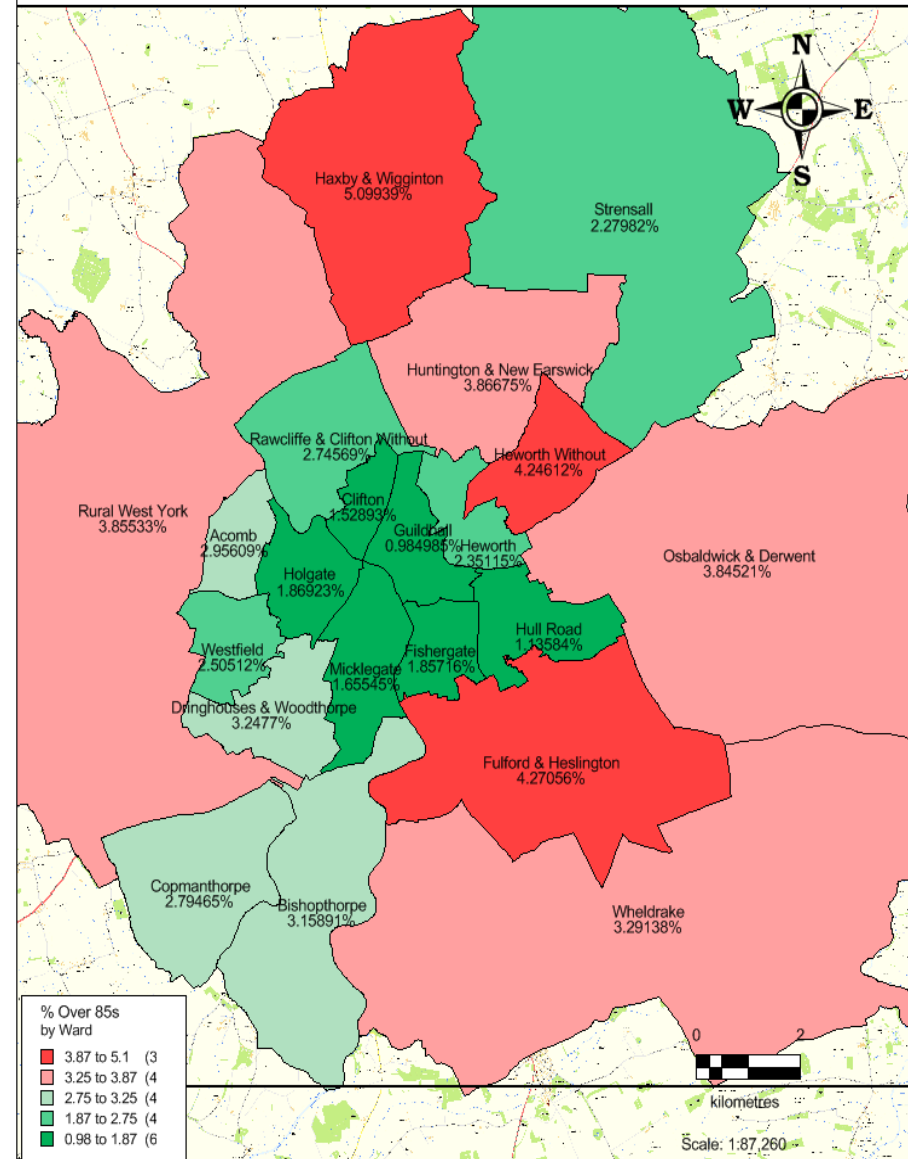


Produced by  
Business Intelligence Hub

Created 18/04/2019

Reproduced from the Ordnance Survey with the Permission of the Controller of Her Majesty's Stationery Office © Crown copyright. Unauthorised reproduction infringes Crown copyright and may lead to prosecution or civil proceedings. City of York Council 100020818 2010

## % Over 85s



Produced by  
Business Intelligence Hub

Created 25/04/2019

Reproduced from the Ordnance Survey with the Permission of the Controller of Her Majesty's Stationery Office © Crown copyright. Unauthorised reproduction infringes Crown copyright and may lead to prosecution or civil proceedings. City of York Council 100020818 2010

# Population Projections

Age	2017	2020	2025	2030	2035
People aged 65-69	10,600	10,000	10,800	12,500	12,500
People aged 70-74	9,700	10,600	9,500	10,300	12,000
People aged 75-79	7,000	7,600	9,700	8,800	9,600
People aged 80-84	5,500	5,800	6,400	8,300	7,600
People aged 85-89	3,400	3,600	4,200	4,800	6,300
People aged 90 and over	2,000	2,100	2,600	3,200	4,100
<b>Total Population 65 and over</b>	<b>38,200</b>	<b>39,700</b>	<b>43,200</b>	<b>47,900</b>	<b>52,100</b>

This table shows the current projections for the population growth of over 65s in York until 2035. The older population of York is expected to rise by **13,900 over the next 15 years**, which is an **increase of 36%**.

Source: **Population aged 65 and over, projected to 2035**, <https://www.poppi.org.uk>

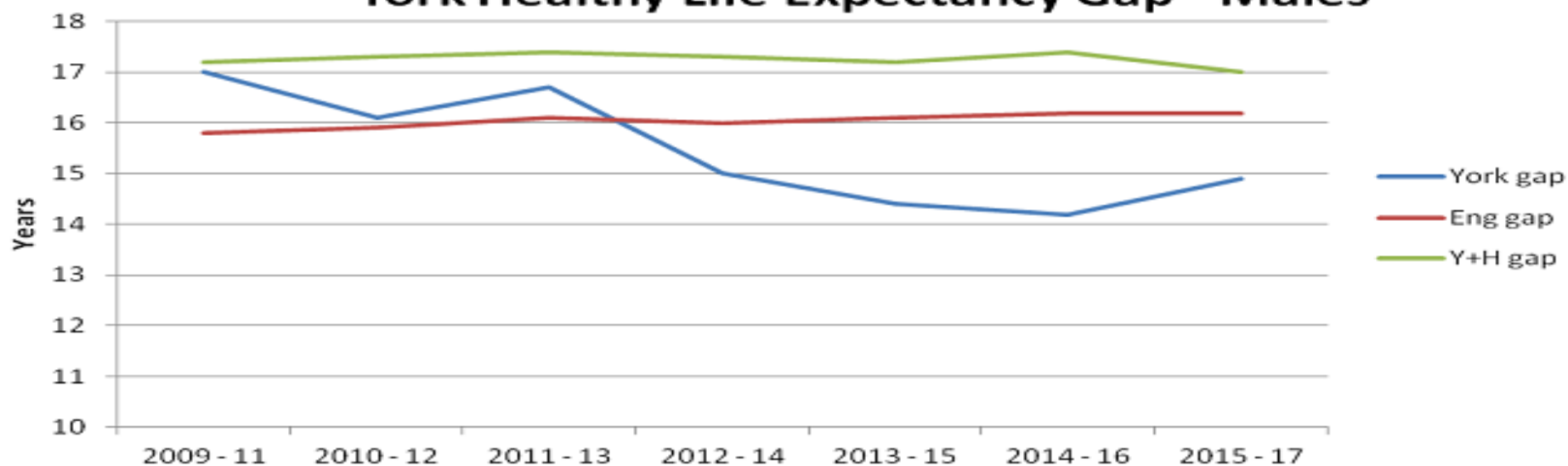


# Inequalities

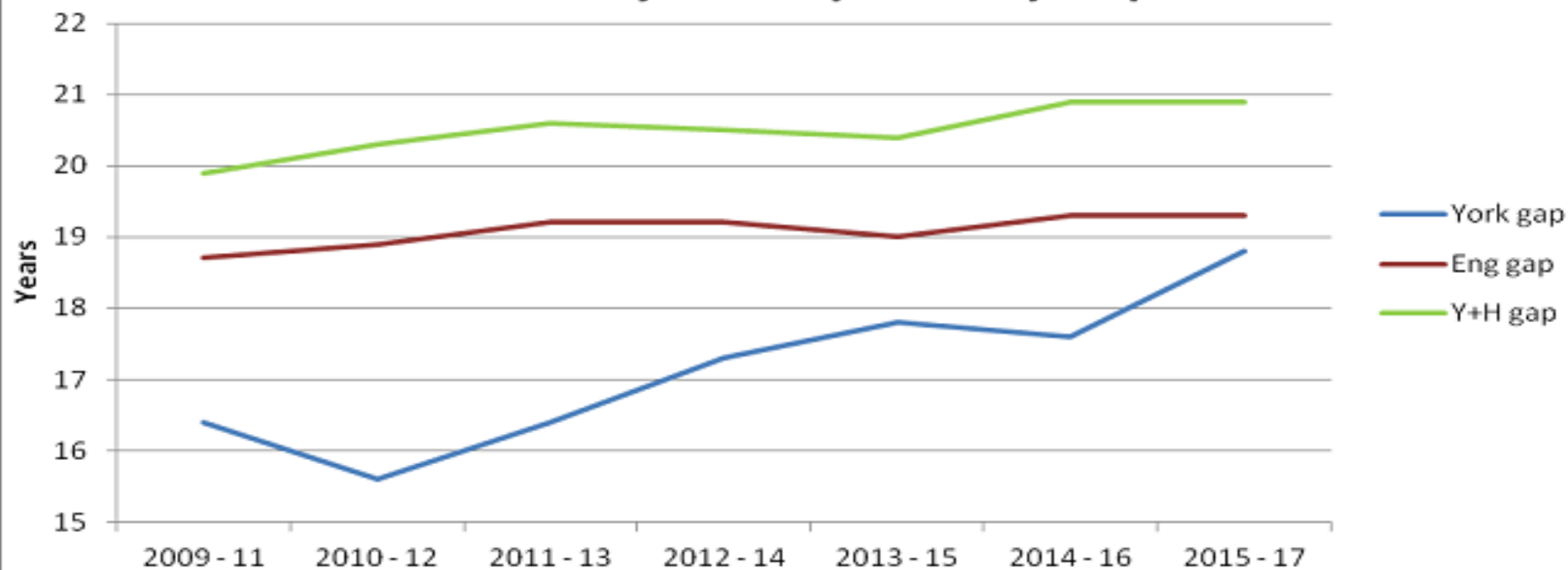
- Inequalities are still having an important impact within our local populations
- Locally the national picture of inequality being linked to higher rate of ill health is replicated
- Typically measured through differences in life expectancy
  - In particular healthy life expectancy



### York Healthy Life Expectancy Gap - Males

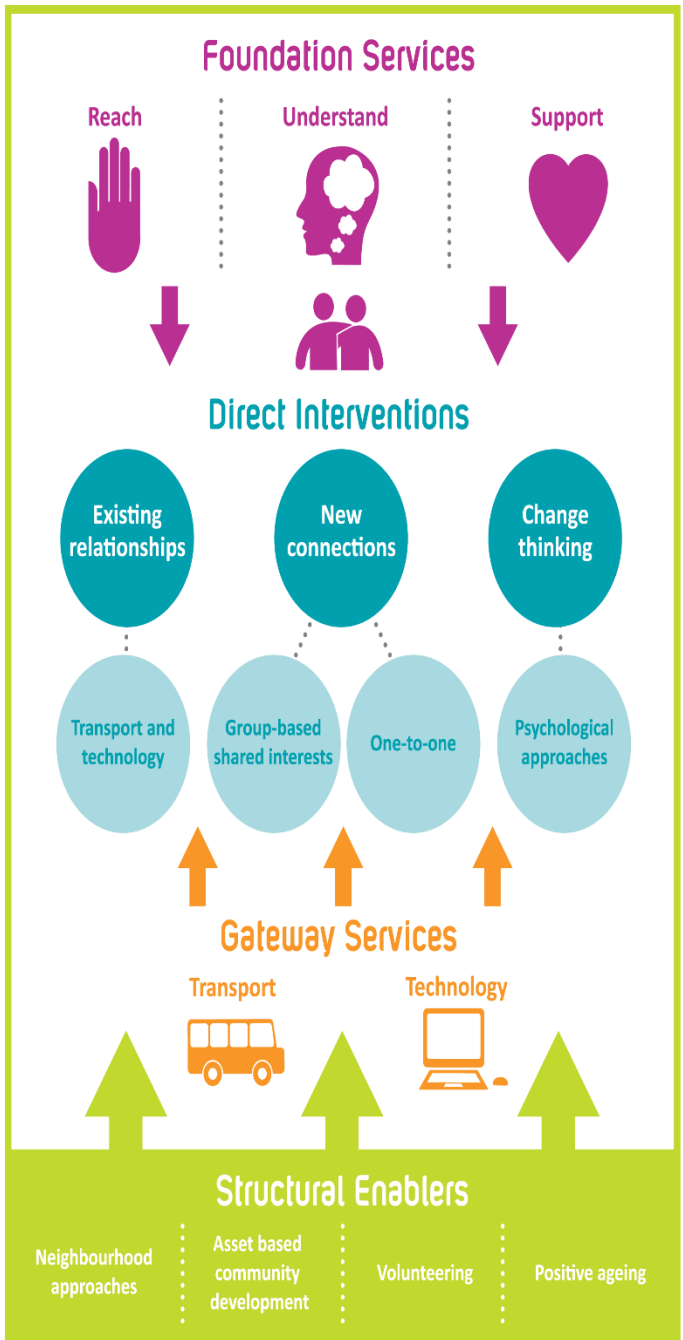


### York Healthy Life Expectancy Gap - Females

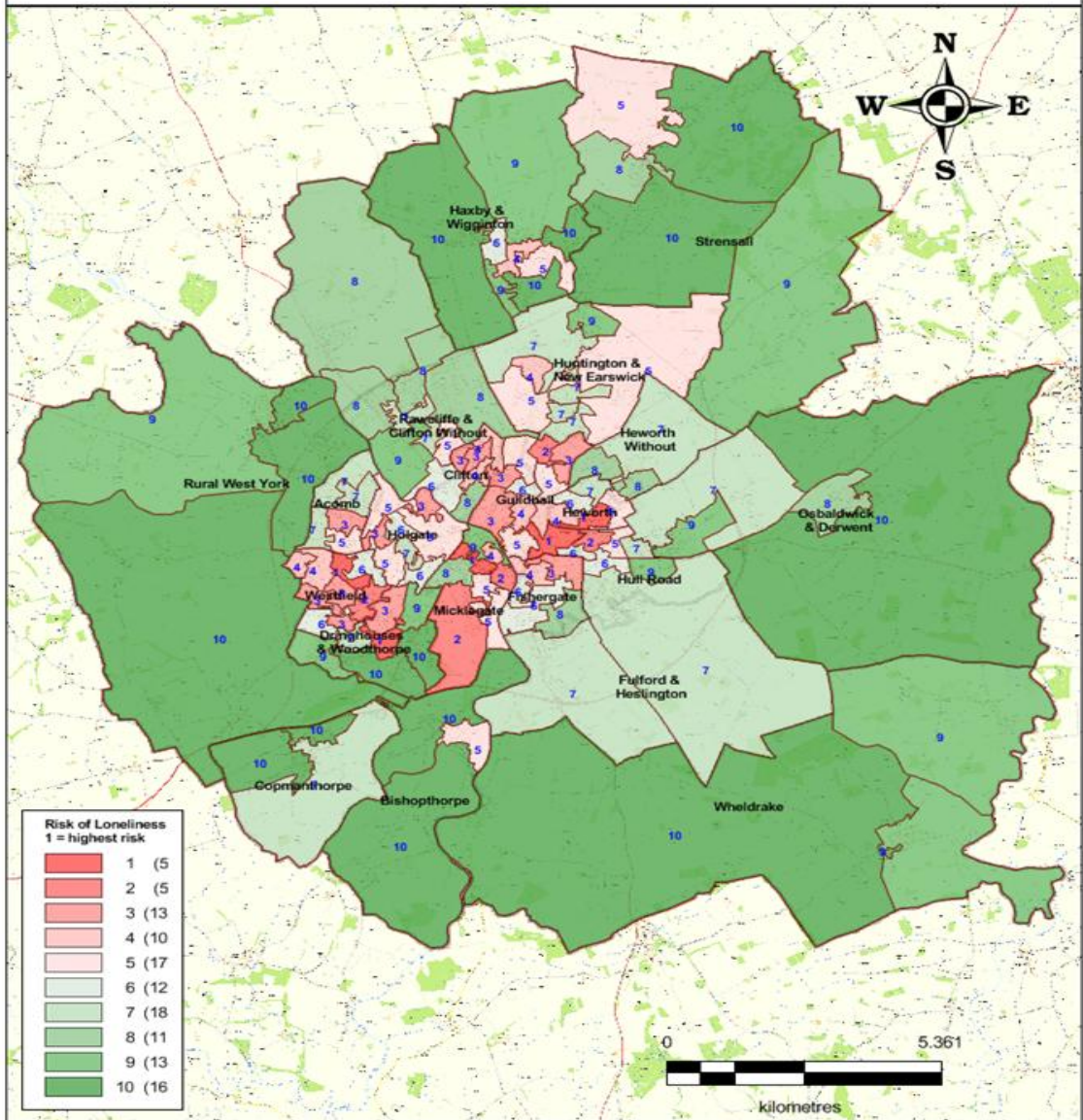


# Ageing & Loneliness

- Social inclusion / social participation is a protective factor to feelings of loneliness
- Social participation and social support are strongly connected to good health and well-being throughout life
- Loneliness and social isolation is not exclusively related to older people, however older adults can face additional barriers to social inclusion
- Campaign to end loneliness  
<https://www.campaigntoendloneliness.org/threat-to-health/>



**Risk of Loneliness (65+) by LSOA**

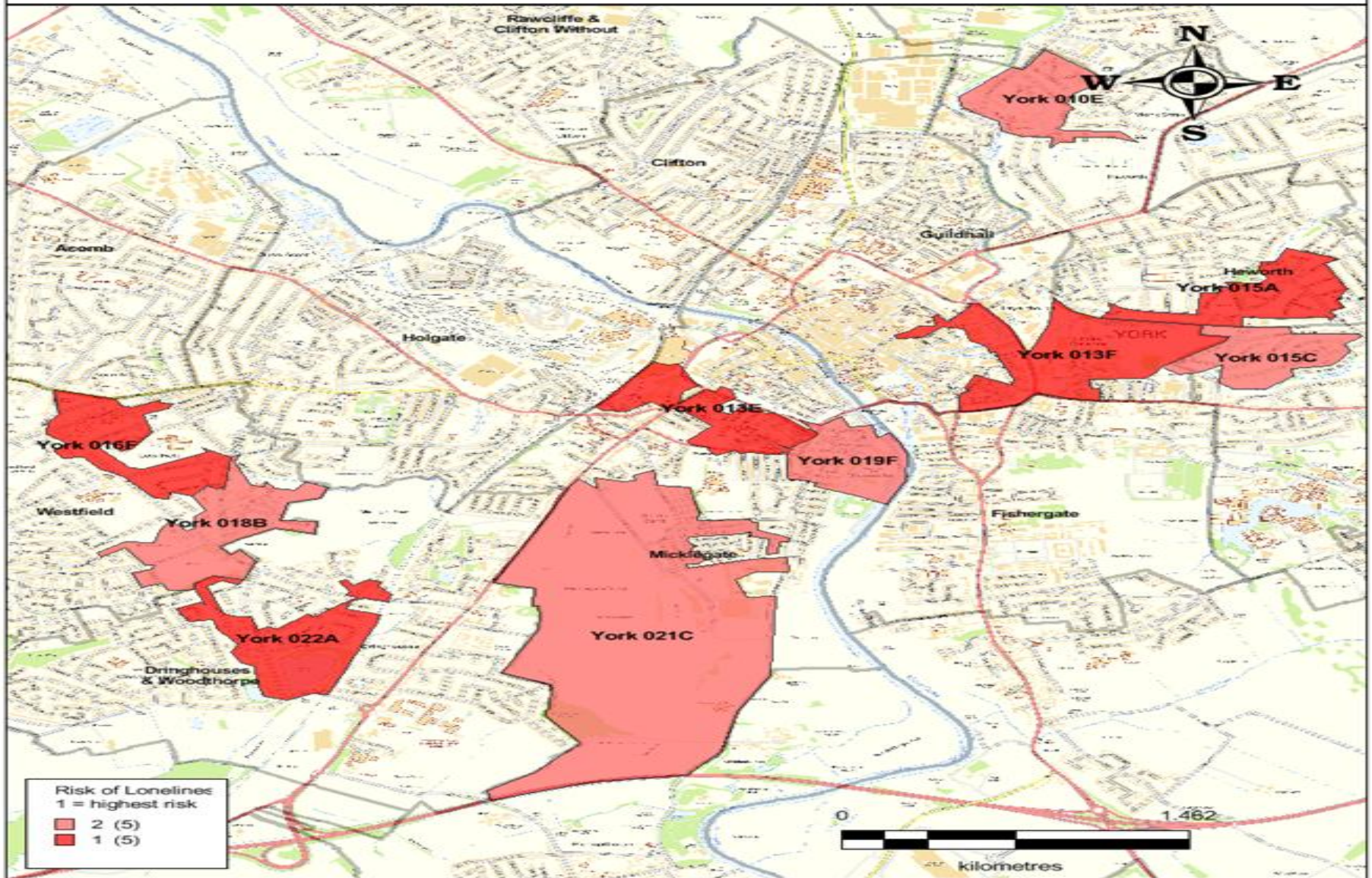


Produced by  
**Business Intelligence Hub**

Created      01/02/2019

Reproduced from the Ordnance Survey with the Permission of the Controller of Her Majesty's Stationery Office © Crown copyright. Unauthorised reproduction infringes Crown copyright and may lead to prosecution or civil proceedings. City of York Council 100020818 2010.

# York LSOAs in the top 20% in England for risk of loneliness



Produced by  
Business Intelligence Hub

Created 01/02/2019

Reproduced from the Ordnance Survey with the Permission of the Controller of Her Majesty's Stationery Office © Crown copyright. Unauthorised reproduction infringes Crown copyright and may lead to prosecution or civil proceedings. City of York Council 100020818 2010.

# Social life/health

