



**EXAMINATION OF THE CITY OF YORK LOCAL PLAN
2017-2033**

PHASE 3 HEARINGS

MATTER 8: NON-STRATEGIC HOUSING ALLOCATIONS

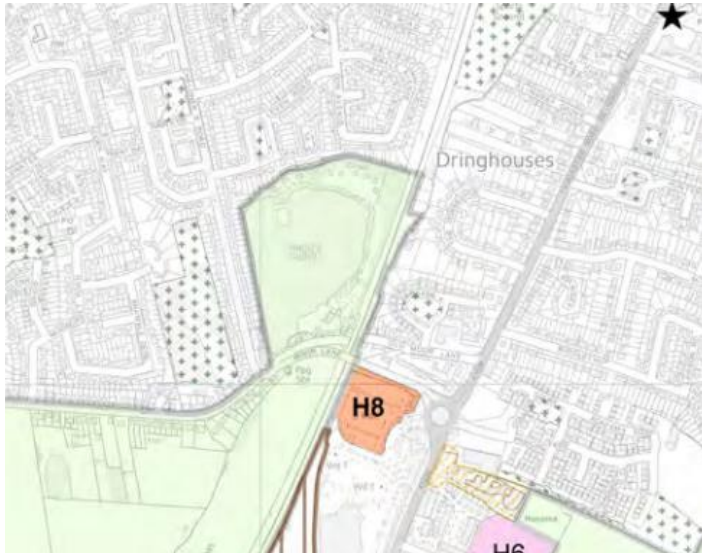
APPENDIX 1

CITY OF YORK COUNCIL STATEMENT

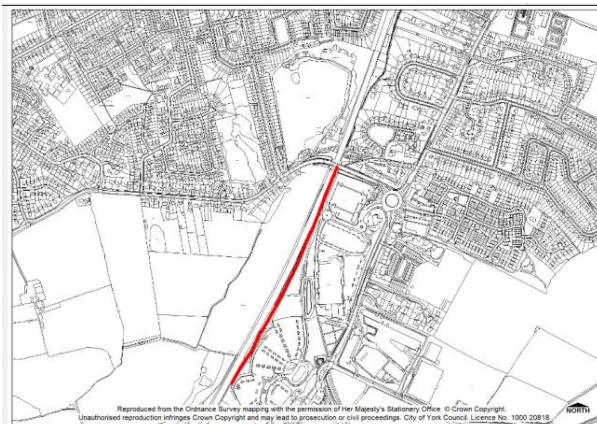
MATTER 8

Allocation H8

CD004b City of York Publication Draft Local Plan Policies Map – South (Allocation Boundary)

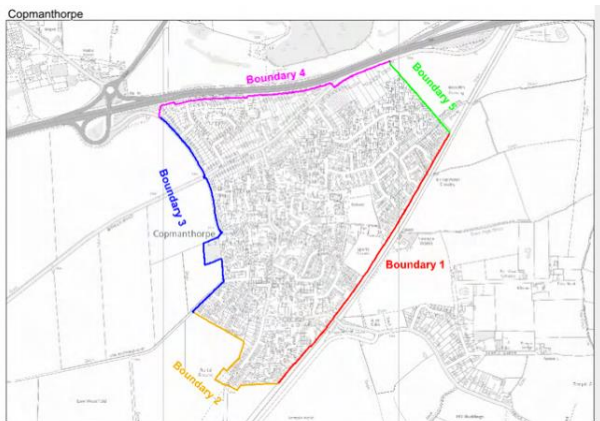


Annex 3 EX/CYC/59e pA3:927 – Final Inner Green Belt Boundary



Allocation H29

Annex 4 EX/CYC/59f pA4:18 – Initial Boundary for Copmanthorpe



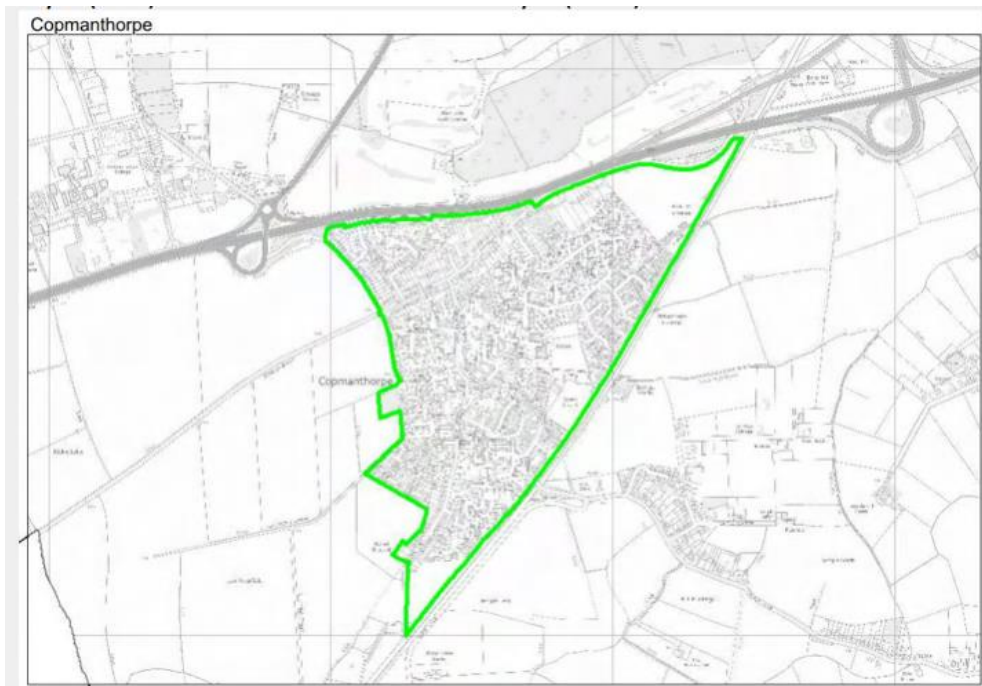
Annex 4 EX/CYC/59f pA4:31 – Allocation Boundary

Boundary 5

Site 185 submitted at Call for site 2012. Allocated as ST31

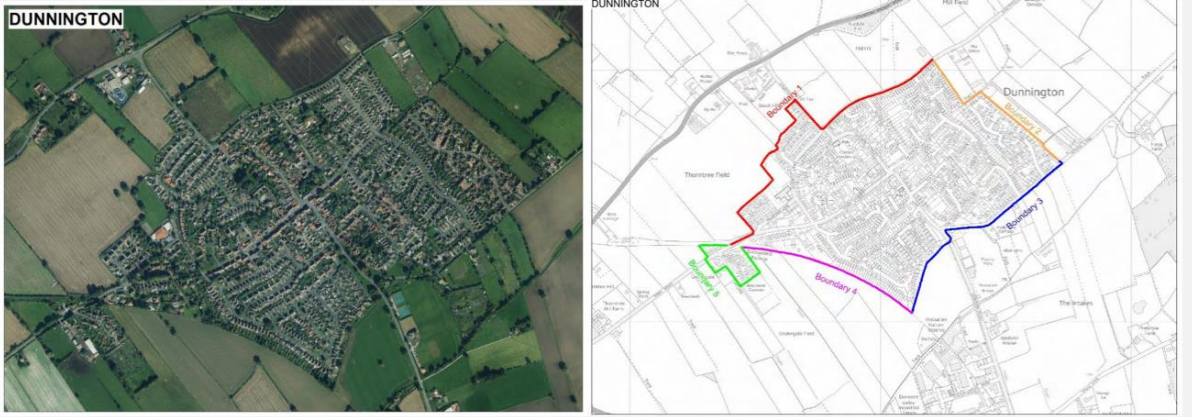


Annex 4 EX/CYC/59f pA4:32 – Final Boundary for Copmanthorpe



Allocation H31

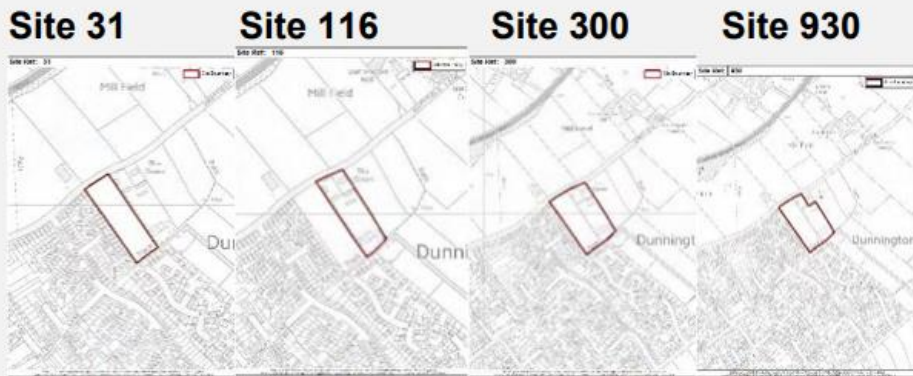
Annex 4 EX/CYC/59f pA4:49 – Initial Boundary for Dunnington



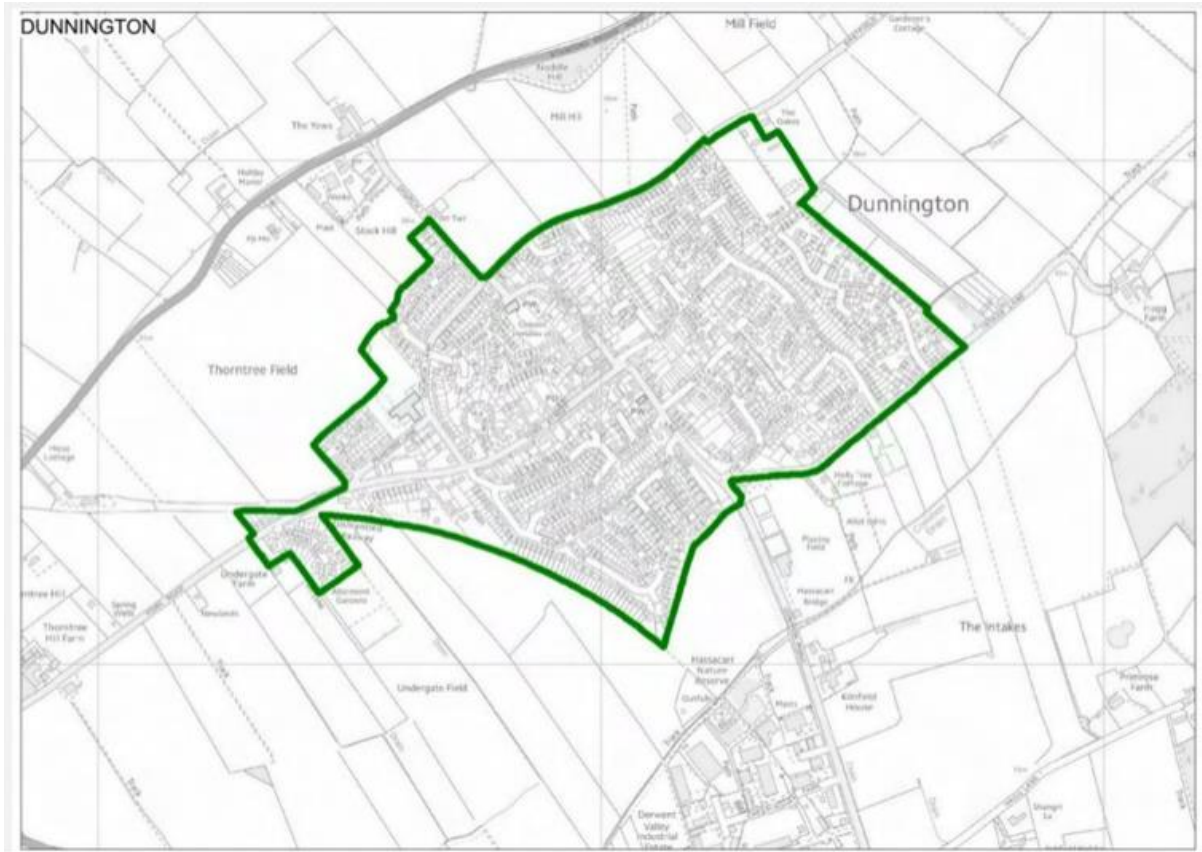
Annex 4 EX/CYC/59f pA4:62 – Allocation Boundary

Boundary 2:

- Amalgamated Site 300 (Inc sites 31, 116, and 930) Land at Eastfield Lane Dunnington – Allocated: H31 (site 930)



Annex 4 EX/CYC/59f pA4:65 – Final Boundary for Dunnington



Allocation H38

Annex 4 EX/CYC/59f pA4:194 - Initial Boundary for Rufforth



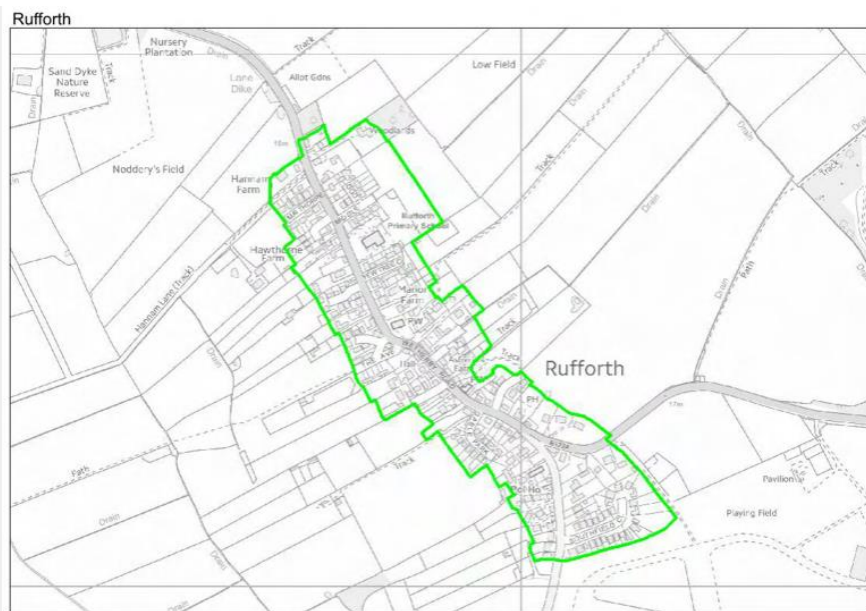
Annex 4 EX/CYC/59f pA4:205 – Allocation Boundary

Boundary 1

Site 677 Historic site.
Allocated



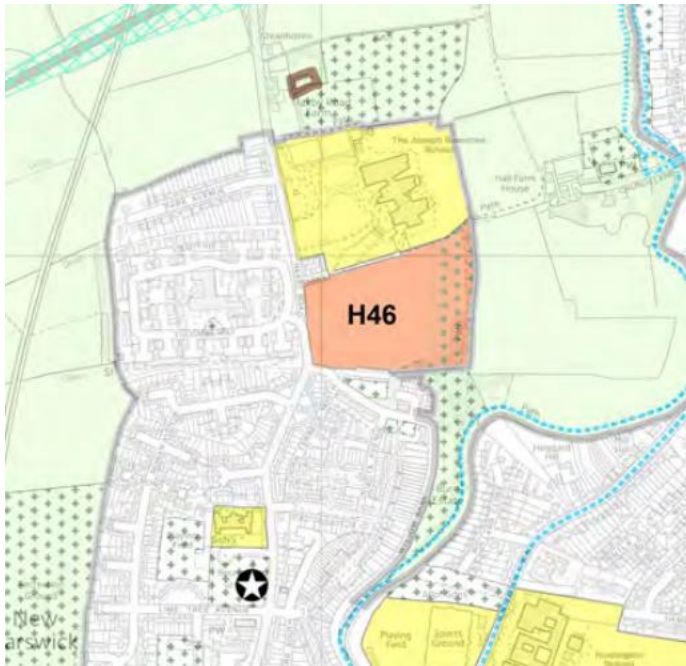
Annex 4 EX/CYC/59f pA4:206 – Final Boundary for Rufforth



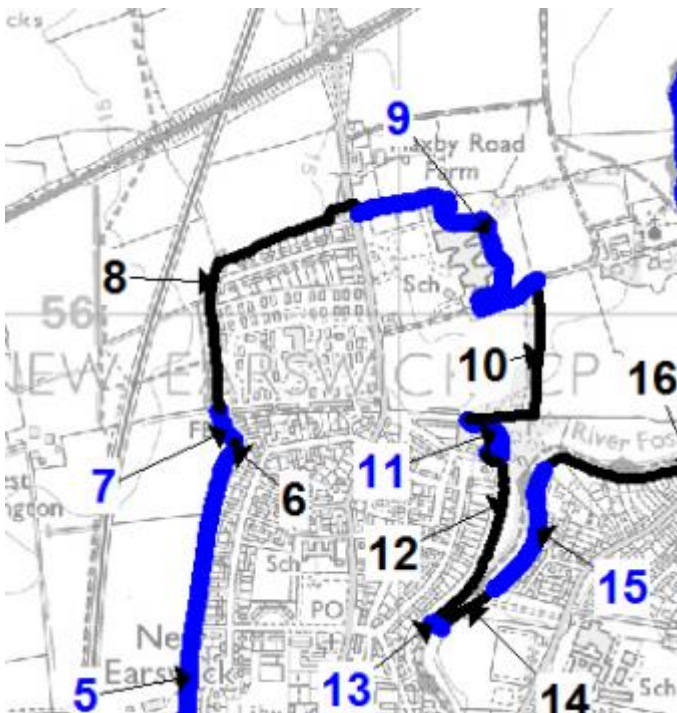
Allocation H39

Annex 4 EX/CYC/59f pA4:81 - Initial Boundary for Elvington





Annex 3 EX/CYC/59d pA3:347 Final Inner Green Belt Boundary



Annex 3 EX/CYC/59d pA3:403 - Final Inner Green Belt Boundary



Allocation H53

Annex 6 EX/CYC/59h pA6:12

